

AM35/45 Radio Motor Manual

- Applied for motorized roller blinds, motorized awnings, motorized projection screen and garage etc;
- Composes by five parts: stator&rotor / brake / planet gearbox, limit switch and built-in radio, receiver (Frequency: 433.92MHz);
- Small size, low weight, weak voice, precision journey positioning, easy installation;
- Motor have self-protection function when exact-hot, it will stop work when motor continuous working time is reaching 4-6mins and motor tube temperature is over 110°C, motor will stop running around 3-10mins, and get right working when recovered.

Notice

Keep away from water	No knock motor	No drill hole on motor tube
Downward cable avoid water inflow	Keep away from corrodent	No in water

A Roller pipe preparation

If round pipe, please measure the right place to knock PIN: No need pin if slot or octagonal pipe

Remark PIN location on pipe then instal idler

Roller pipe

B Installation

1 Insert Crown 2 Insert Adaptor 3 Insert Pin 4 Installed into roller pipe 5 Knock Pin and fix pipe, complete installation

C Fix

Insert Pin into square metal head

Over view

Insure horizontal placement

D Power wire and connection

230V/50Hz: Blue=Neutral, Brown=Live, Earth=Green/Yellow

120V/60Hz: White=Neutral, Black=Live, Earth=Green

Wiring Drawing

AC Power Input

Drawing instruction

FRONT Transmitter BACK

Clockwise: Increase journey
Anticlockwise: Decrease journey

Forbid use electric screwdriver, only use regulator to adjust journey position and ensure adjust speed below 30rpm/min

A Blue line: UP/DOWN limit position
B Red line: New position after readjust

Settings

1. Get into program preparation

Method 1: Press LEFT/RIGHT to choose channel, Press UP for 3s, Power on motor, Motor jogs once then release UP, Done

Method 2: Press LEFT/RIGHT to the programmed channel, Power on motor, Press STOP for 5s, Motor jogs once then release STOP, Done

2. Programing

When motor is under program preparation, Press UP, Motor jogs once, Programmed

When motor is under program preparation, Press PROG for 1s, Motor jogs once, Single code is now deleted

When motor is under program preparation, Press STOP for 7s, Motor jogs twice, All codes now are deleted

4. Changing direction

When motor is under program preparation, Press down, Motor jogs once, Changed

5. Dot/continuous moving switching

When motor is under program preparation, Press STOP, Motor jogs once, Done

E Adjust Journey Position

Installation 1

A. When motor limit head is left side, blinds outward rolling move

B. Adjust the UP adjusting knob to change UP limit position

C. Adjust the DOWN adjusting knob to change DOWN limit position

Set UP limit position: Power on motor, Press UP, When UP limit switch is above expected place, Press DOWN, Toward "-" direction clockwise rotate adjusting knob until blinds running below to the expected position, Press UP, Toward "+" direction, anti clockwise rotate adjusting knob until blinds running to the expected position, UP limit position is set

When UP limit switch is below expected place, Press UP, Toward "+" direction, anti clockwise rotate adjusting knob until blinds running to the expected position, UP limit position is set

Set DOWN limit position: Power on motor, Press DOWN, When DOWN limit switch is below expected place, Press UP, Toward "-" direction clockwise rotate adjusting knob until blinds running above to expected position, Press DOWN, Toward "+" direction, anti clockwise rotate adjusting knob until blinds running to the expected position, DOWN limit position is set

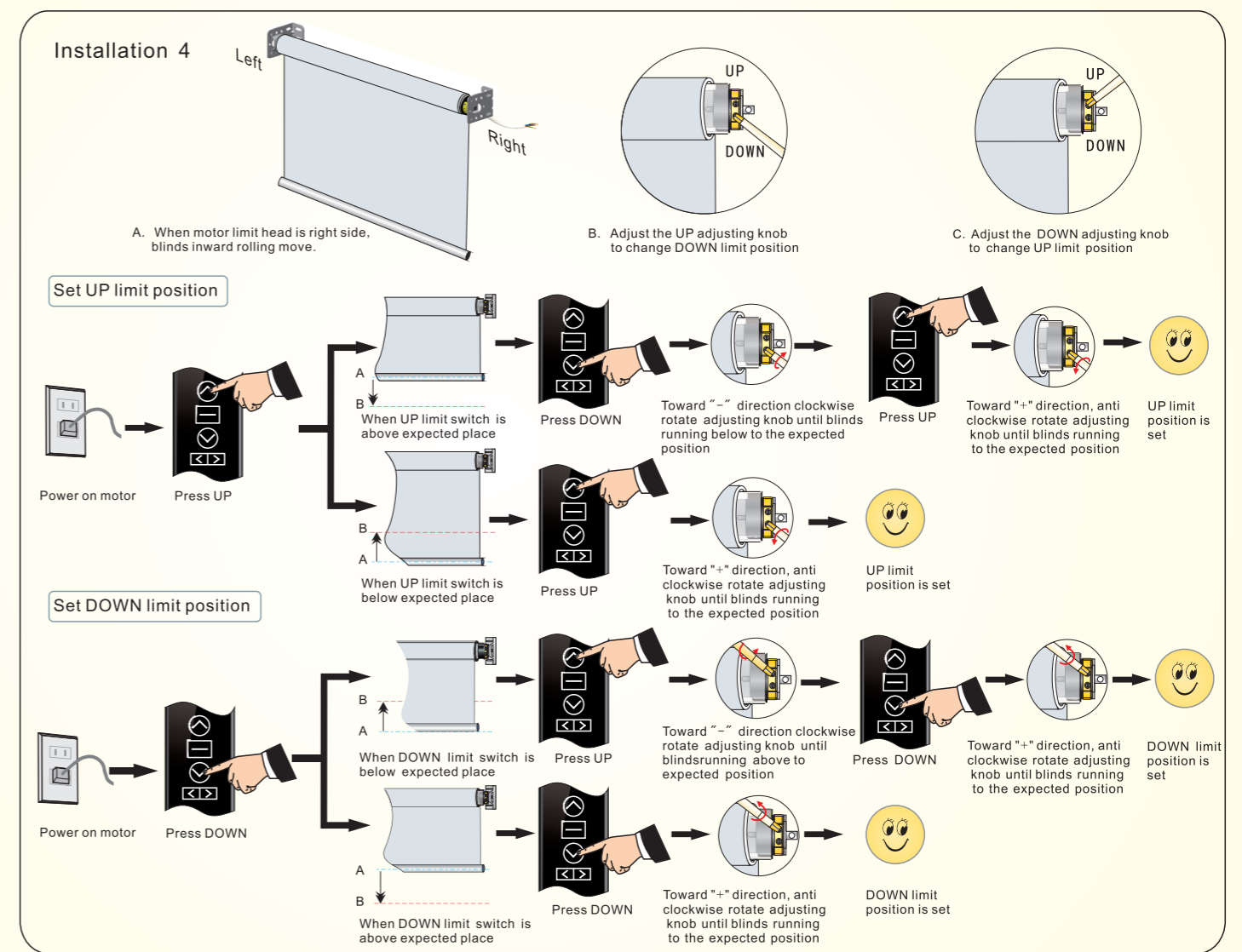
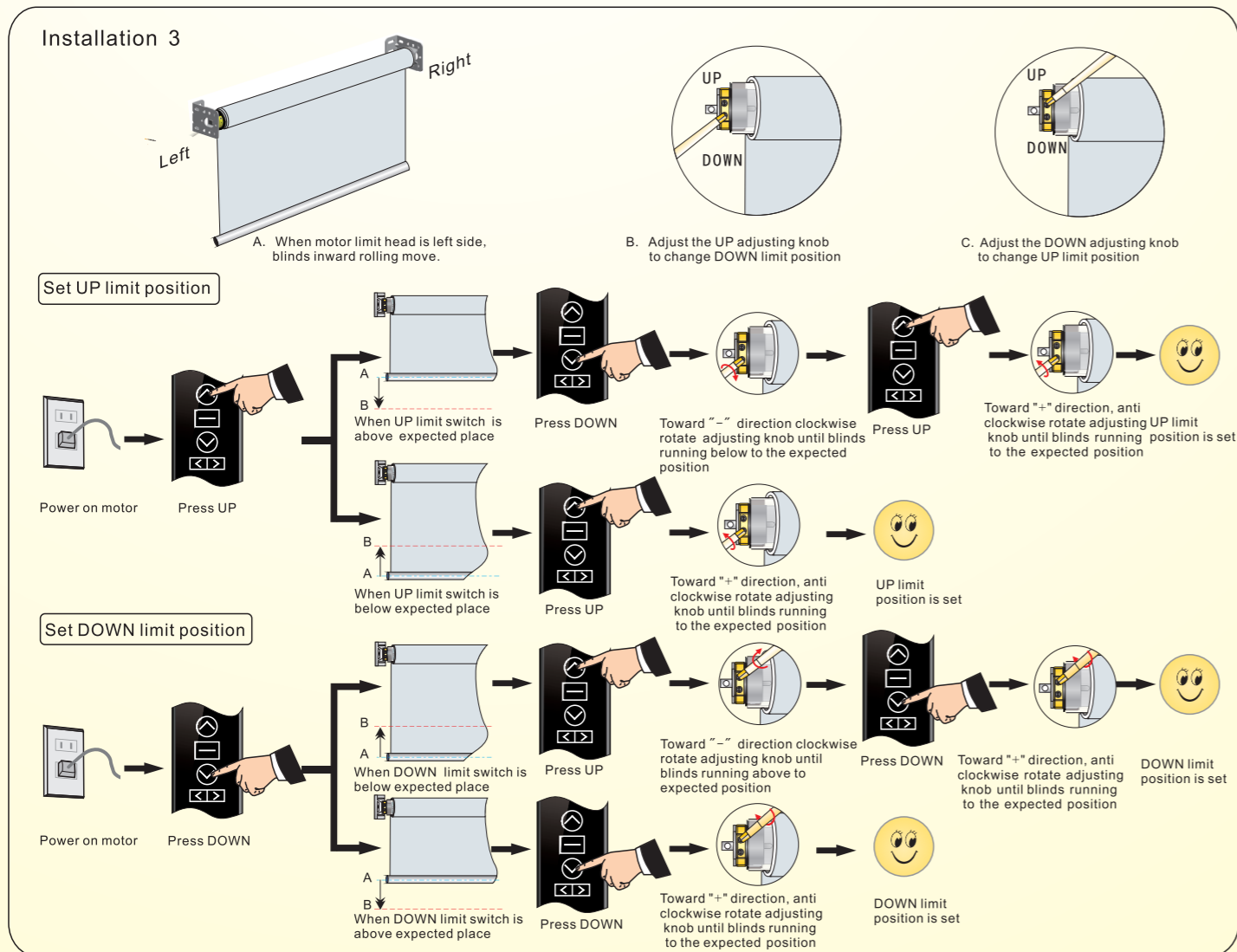
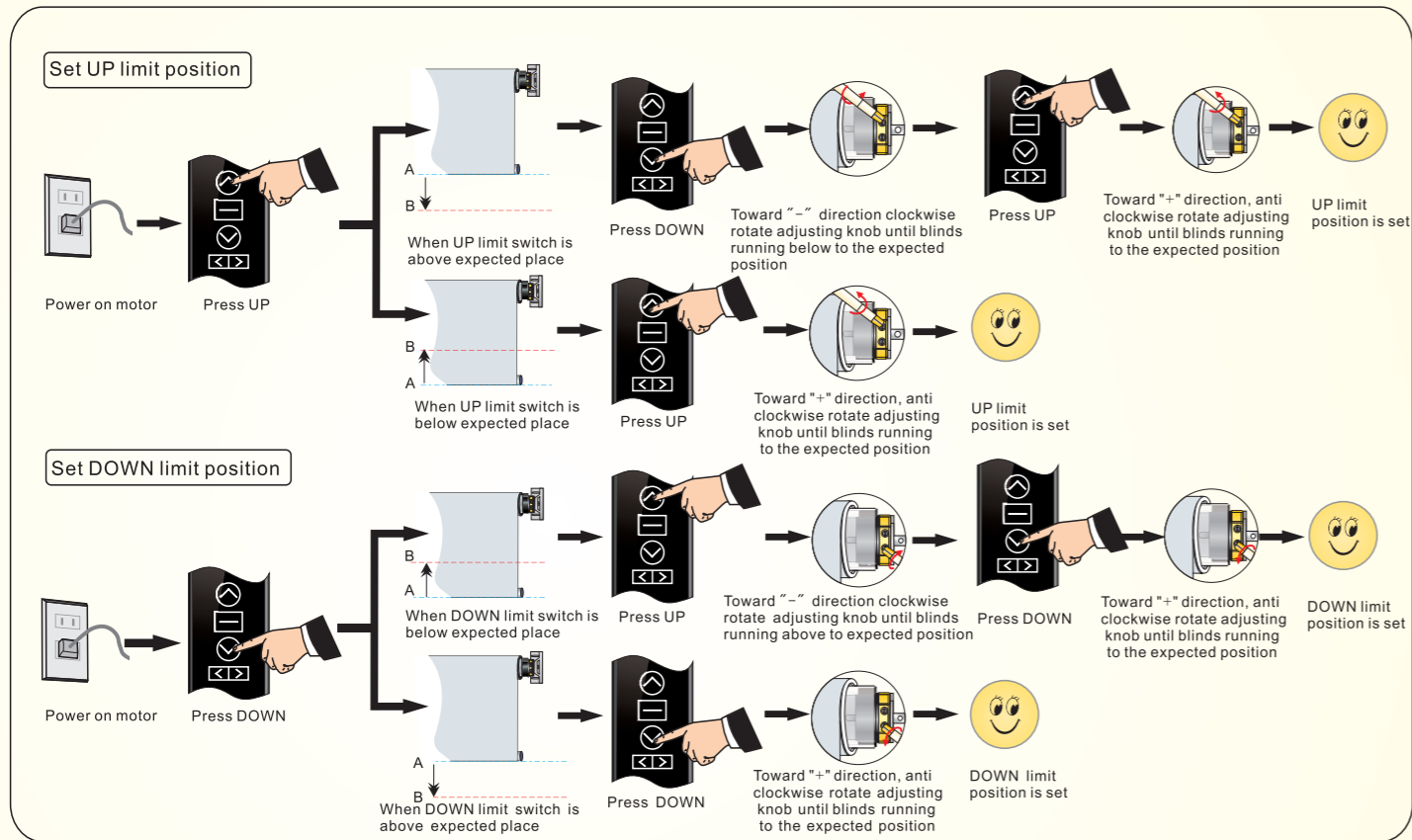
When DOWN limit switch is above expected place, Press DOWN, Toward "+" direction, anti clockwise rotate adjusting knob until blinds running to the expected position, DOWN limit position is set

Installation 2

A. When motor limit head is right side, blinds outward rolling move

B. Adjust the UP adjusting knob to change UP limit position

C. Adjust the DOWN adjusting knob to change DOWN limit position



Remark: 25° angle limit motor (Picture2)

Adjust journey position by adjusting knob as Picture 1.

Set UP limit position : Corresponding above four installation, the same as set DOWN limit position

Set DOWN limit position : Corresponding above four installation, the same as set UP limit position

Picture 1

Clockwise: Increase journey
Anticlockwise: Decrease journey

Picture 2

25° angle limit motor

F Troubleshooting

Items	Problem	Matter	Shooting
1	After connecting with the power, the motor can not work or work slowly.	a. The voltage is wrong b. Over loading c. Wrong installation cause accessories stuck	a. Change to rated voltage b. Adjust loading until safety loading c. Check accessories and ensure the correct installation
2	After connecting with power, only one direction can work, the other direction can not work	The limit position of fail working is not opened	Rotate crown 1or 2 circles by hand on the opposite of motor current running direction
3	The motor stops running suddenly	a. The motor is in the mode of over-heat protection; precaution, over 130°C b. Power is off c. Motor arrived at the limited position	a. when temperature drops(after about 3 minutes), the motor will come back to work again b. Once connecting with the power well, the motor will come back to work c. To check whether need to change limit position by adjusting knob
4	Press controller / switch's DOWN button, blinds UP running	Wrong wiring	Exchange the connection of black and blue wires.